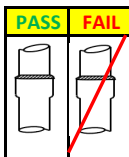


Safety (Max points 60)	Points
Safety Clear Glasses	5
Cut resistant sleeves	5
Kevlar Gloves	5
Composite Toe shoes	5
Proof of Certification	10
Wrap Sniffer probe cord	10
Position of elbow (close to the body)	20
Max Points	60

Quality (Max points 35)	Points
Condition of Equipment	5
Verify settings: 2.0×10^{-5} mbar HE	10
Calibration	5
Position of probe during CAL (Bonus)	5
Sequence (Left to Right) Disqualified	10
Max Points	35



Competitor #	
Judge	

Quality (Max Points 40)																				
Formula	1.0 Seconds /inch x 20 Brazing Joints = 20 Seconds																			
Category	1	2	3	4	5	6	7	8	9	10	11	12	13	14	15	16	17	18	19	20
Speed: Must follow a speed of 1.0 sec per inch.																				
Required time (seconds)	4.5	5	5.5	6	6.5	7	7.5	8	8.5	9	9.5	10	10.5	11	11.5	12	12.5	13	13.5	14
Actual time																				

Leak 1		
Pin Point	Quantify	Total

Leak 2		
Pin Point	Quantify	Total

Max Points	20	60
-------------------	-----------	-----------

Max Points	20	60
-------------------	-----------	-----------

Technique (Max Points 140)																				Total Points	Judgement		
Category	1	2	3	4	5	6	7	8	9	10	11	12	13	14	15	16	17	18	19	20			
Distance: Follow a distance of $\frac{1}{4}$ " maximum between the brazing joint and the tip of probe.																						<p>* Not following the correct technique on any 1 brazing joint, points will be deducted.</p> <p>Each brazing joint = 2 points</p>	
Motion: Follow a semi-circular motion on every brazing joint while keeping the required distance.																							
Center: Stay on the center of the brazing joint.																							
*Operator must Pinpoint and Quantify Leaks between: 1:30-2 minutes	Speed (With Leaks)																			Total Time:	Total Points		
	Time (minutes)	1:00	1:30	2:00	2:30	3:00																	
	Points	0	60	50	40	30	20	10	0														
Zero Key																			Bonus	Total Points			
Use Zero Key to clear the signal and verify location of the leak (Pinpoint)																			20				

Cleanliness (Max Points 40)		Bonus
*Operator must leave the station ready for the next competitor	Place sniffer probe on probe holder on equipment	20
	Set equipment to Stand By Mode	20
	Max Points	40

Total Score:	
---------------------	--